

Eaton Road, West Derby, L12



To Let - £900 per calendar month

Key Features

- 3 Bedroom 1 Bathroom Terraced House
- EPC Rating: C71
- Well Presented Accommodation
- Local Shops and Amenities of West Derby Village
- Available Now
- Ample on Street Car Parking
- Rear Yard With Gated Access
- Double Glazing & Gas Central Heating
- Surrounded By Quality Local Schools
- Served By Good Transport Links
- Modern Kitchen & Bathroom
- Early Viewing Advised!

Move-in Costs

- Security Deposit: £1,038.46
- To secure this property you are required to pay a holding deposit equal to one weeks rent, £207.69. The holding deposit will go on to form part of your rent/security deposit. The balance of any rent/security deposit is normally payable the working day before you move in.

Description

A WELL PRESENTED 3 BEDROOM TERRACED PROPERTY LOCATED JUST MINUTES FROM WEST DERBY VILLAGE

The accommodation briefly comprises of; entrance hallway, front living room, back dining room, kitchen, family bathroom and separate W.C. To the first floor are two double bedrooms and a single bedroom. Externally there a rear yard with gated access.

The property also benefits from double glazing and gas central heating.

This opportunity will not be on the market for long so contact us today to arrange your viewing!

Further Details

- Furnishing: Unfurnished
- No. of Floors: 2
- Council Tax Band: B
- Local Authority: Liverpool City Council
- Parking: On Street
- Outside Space: Back Yard
- Heating/Energy: Gas Central Heating, Double Glazing
- Appliances/White Goods: Gas Oven, Gas Hob, Fridge, Freezer, Washing Machine
- Bills Included: None

Letting Information

- Date Available From: Now
- Minimum Term: 12 months
- Minimum Annual Household Income: £27,000
- Guarantor NOT required (subject to referencing)
- Pets NOT considered
- Smoking NOT permitted

Additional Images



Bedroom 3



Bathroom



Bedroom 2



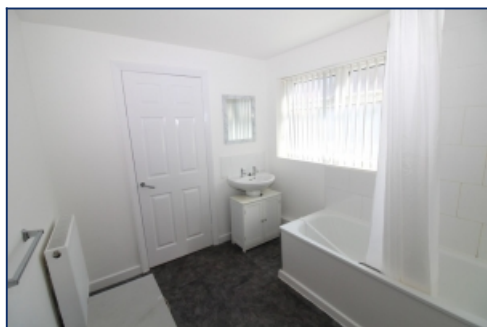
Kitchen



Reception



Kitchen



Bathroom



Wc

Tel: 0151 727 2469
Fax: 0151 727 4943

Atlas Estate Agents, 2 Allerton Road,
Mossley Hill, Liverpool, L18 1LN

Email: lettings@atlasestateagents.co.uk
Website: www.atlasestateagents.co.uk

These particulars are intended to give a fair and substantially correct overall description for the guidance of intending purchasers/tenants and do not constitute an offer or part of a contract. Please note that any services, heating systems or appliances have not been tested and no warranty can be given or implied as to their working order. Prospective purchasers/tenants ought to seek their own professional advice.

All descriptions, dimensions, areas, references to condition and necessary permissions for use and occupation and other details are given in good faith and are believed to be correct, but any intending purchasers/tenants should not rely on them as statements or representations of fact, but must satisfy themselves by inspection or otherwise as to the correctness of each of them.