

Bampton Road, Childwall, L16



For Sale - £325,000

Key Features

- 3 Bedroom 1 Bathroom Semi-Detached House
- EPC Rating: C73
- No Chain
- Brand New Fitted Kitchen
- Large Rear Garden with Patio Area
- Sought After South Liverpool Location
- Driveway Parking for 2x Cars
- Ideal Family Home
- Served by Good Transport Links
- Fully Refurbished to an Excellent Standard
- Early Viewing Advised!

Further Details

- Tenure: Freehold
- No. of Floors: 2
- Floor Space: 73 square metres / 782 square feet
- Council Tax Band: C
- Local Authority: Liverpool City Council
- Parking: On Street, Off Street, Driveway
- No. of Parking Spaces: 2
- Outside Space: Patio/Decking, Front Garden, Back Garden
- Heating/Energy: Gas Central Heating, Double Glazing
- Appliances/White Goods: Electric Oven, Electric Hob (Ceramic), Fridge, Freezer, Washing Machine

Description

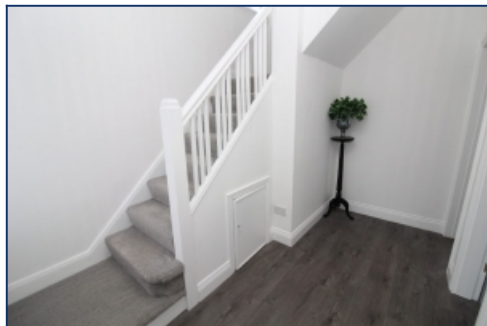
A STUNNING 3 BEDROOM SEMI DETACHED PROPERTY BENEFITTING FROM NO ONWARD CHAIN

The accommodation briefly comprises of; spacious entrance hallway, living room, open plan kitchen and dining area. To the first floor are two double bedrooms, a single bedroom and a family bathroom. Externally there is a large rear garden and driveway parking for two cars to the front of the property.

The property also benefits from double glazing, gas central heating and a recent refurbishment throughout.

This opportunity will not be on the market for long so contact us today to arrange your viewing!

Additional Images



Hallway



Dining Room



Kitchen



Dining Room



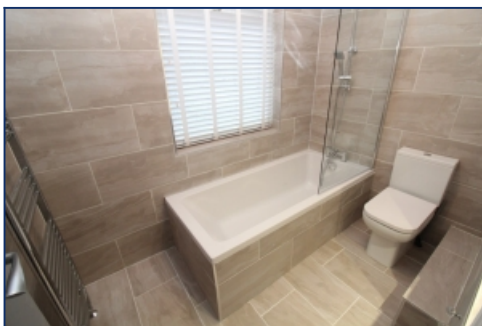
Bedroom One



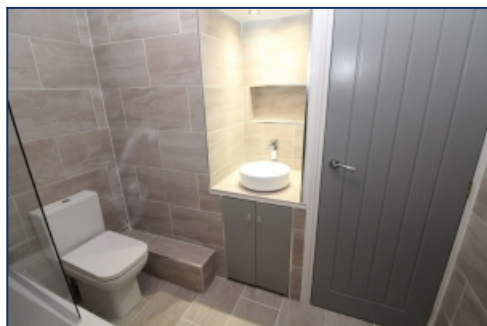
Bedroom Two



Bedroom Three



Bathroom



Bathroom

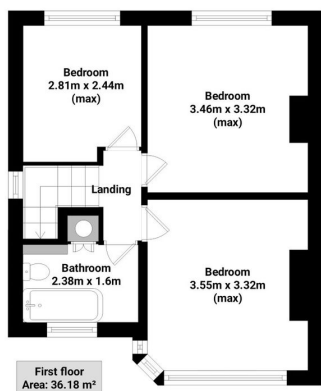
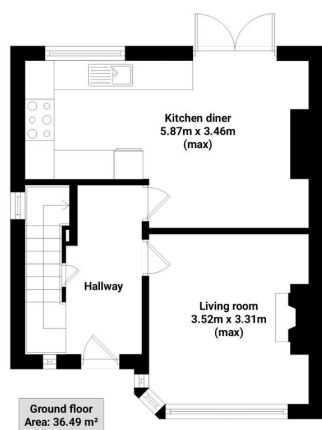


Rear Garden



Rear Garden

Floor Plans



Tel: 0151 727 2469
Fax: 0151 727 4943

Atlas Estate Agents, 2 Allerton Road,
Mossley Hill, Liverpool, L18 1LN

Email: sales@atlasestateagents.co.uk
Website: www.atlasestateagents.co.uk

These particulars are intended to give a fair and substantially correct overall description for the guidance of intending purchasers/tenants and do not constitute an offer or part of a contract. Please note that any services, heating systems or appliances have not been tested and no warranty can be given or implied as to their working order. Prospective purchasers/tenants ought to seek their own professional advice.

All descriptions, dimensions, areas, references to condition and necessary permissions for use and occupation and other details are given in good faith and are believed to be correct, but any intending purchasers/tenants should not rely on them as statements or representations of fact, but must satisfy themselves by inspection or otherwise as to the correctness of each of them.