

Upper Stanhope Street, Toxteth, L8



For Sale - £225,000 Offers in the Region of

Key Features

- 3 Bedroom 1 Bathroom Semi-Detached House
- EPC Rating: C76
- No Chain Three Bedroom Semi-Detached Property
- Generous Corner Plot
- Large Rear Garden With Apple Tree
- Modern Kitchen/Diner
- Modern Fitted Bathroom
- Popular Residential Area
- Sought After Location
- Good Transport Links
- Off Street Parking
- Viewing Highly Recommended - Idea Family Home

Further Details

- Tenure: Freehold
- No. of Floors: 2
- Floor Space: 73 square metres / 791 square feet
- Council Tax Band: A
- Local Authority: Liverpool City Council
- Parking: Off Street, Driveway
- Outside Space: Front Garden, Back Garden
- Heating/Energy: Gas Central Heating, Double Glazing
- Appliances/White Goods: Electric Cooker

Description

Set on a corner plot with a large mature garden.

The property comprises of; entrance hallway, living room, kitchen/diner. To the first floor are three bedrooms and a family bathroom. Externally, there are large mature front, side and rear gardens.

This opportunity will not be on the market for long so contact us today to arrange your viewing!

Additional Images



Gardens



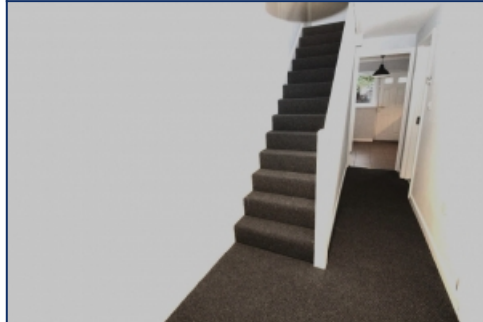
Front



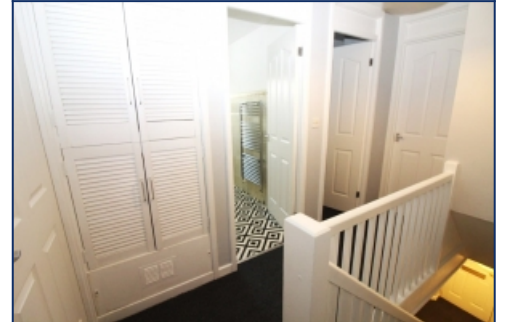
Reception



Kitchen



Hallway



Landing



Bedroom 1



Bedroom 2



Bedroom 3



Gardens



Side

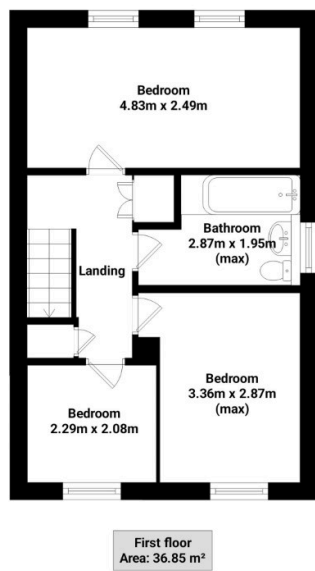
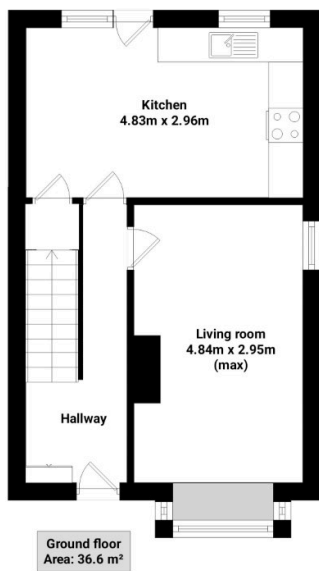


Rear Garden



Rear Garden

Floor Plans



Tel: 0151 727 2469
Fax: 0151 727 4943

Atlas Estate Agents, 2 Allerton Road,
Mossley Hill, Liverpool, L18 1LN

Email: sales@atlasestateagents.co.uk
Website: www.atlasestateagents.co.uk

These particulars are intended to give a fair and substantially correct overall description for the guidance of intending purchasers/tenants and do not constitute an offer or part of a contract. Please note that any services, heating systems or appliances have not been tested and no warranty can be given or implied as to their working order. Prospective purchasers/tenants ought to seek their own professional advice.

All descriptions, dimensions, areas, references to condition and necessary permissions for use and occupation and other details are given in good faith and are believed to be correct, but any intending purchasers/tenants should not rely on them as statements or representations of fact, but must satisfy themselves by inspection or otherwise as to the correctness of each of them.