

Kenmare Road, Wavertree, L15



For Sale - £230,000

Key Features

- 3 Bedroom 1 Bathroom Terraced House
- EPC Rating: C
- No Onward Chain
- Well Presented & Maintained Throughout
- Large Open Plan Kitchen/Dining/Living Area
- Separate Front Reception Room
- Three Spacious Bedrooms And
- Large Modern Bathroom with Bath and Shower
- Private Gated Courtyard
- On Street Car Parking
- Loft Storage Space with Ladder
- Close to Excellent Amenities, Great Transport Links and Local Green Spaces - Minutes Walk to Sefton Park

Further Details

- Tenure: Freehold
- No. of Floors: 2
- Floor Space: 93 square metres / 997 square feet
- Council Tax Band: A
- Local Authority: Liverpool City Council
- Parking: On Street
- Outside Space: Back Yard
- Heating/Energy: Gas Central Heating, Double Glazing
- Appliances/White Goods: Electric Cooker

Description

Introducing this charming terraced house on Kenmare Road, Wavertree, L15, proudly brought to you by Atlas Estate Agents. Nestled in a vibrant neighborhood, this property boasts convenience, comfort, and character.

Step inside to discover a meticulously maintained interior spread over two floors. The ground level welcomes you with a spacious front reception room, perfect for relaxing evenings or entertaining guests.

As you proceed, be captivated by the expansive open-plan kitchen, dining, and living area. This inviting space is bathed in natural light, offering a seamless blend of functionality and style. Whether you're whipping up culinary delights or enjoying meals with loved ones, this area is sure to be the heart of your home.

Upstairs, three generously sized bedrooms await, each offering a tranquil retreat for rest and relaxation. Accompanied by a large modern bathroom featuring both a bath and shower, indulgence is just a step away.

Outside, a private gated courtyard awaits, providing a serene oasis for outdoor gatherings or quiet moments of reflection. Convenient on-street parking

ensures hassle-free access for you and your guests.

Additional features include loft storage space with a convenient ladder, ideal for stowing away belongings with ease. Plus, with no onward chain, the transition to your new abode is smooth and stress-free.

Located mere minutes from Sefton Park, this residence offers proximity to excellent amenities, great transport links, and abundant green spaces. Experience the best of city living while enjoying the tranquility of suburban life.

Don't miss the opportunity to make this delightful property your own. Contact Atlas Estate Agents today to arrange a viewing and embark on your next chapter in this welcoming Wavertree abode.

Additional Images



Bedroom 2



Bathroom



Hallway



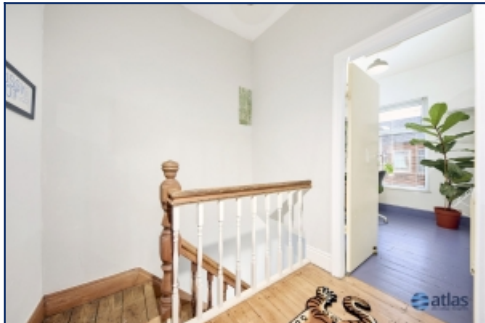
Dining Area



Kitchen



Kitchen



Landing



Bedroom 1



Bedroom 3



Private Courtyard

Floor Plans

