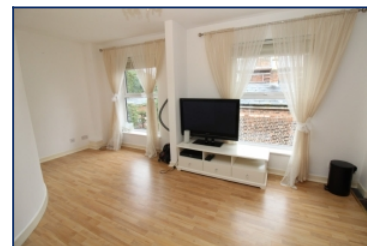
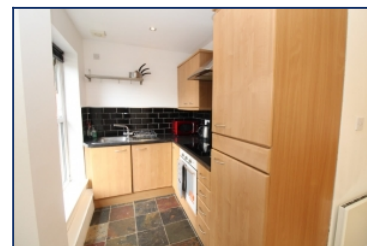


St Marys Road, Huyton, L36



To Let - £650 per calendar month

Key Features

- 1 Bedroom 1 Bathroom Duplex Apartment
- EPC Rating: D62
- Extremely Well Presented
- Modern Fitted Kitchen With Appliances
- Served By Good Transport Links
- Off Road Parking
- Duplex Apartment
- Situated In A Beautiful Period Building
- Available Now
- Large Well Maintained Communal Gardens
- Local Shops And Amenities
- Early Viewing Advised!

Move-in Costs

- Security Deposit: £750.00
- To secure this property you are required to pay a holding deposit equal to one weeks rent, £150.00. The holding deposit will go on to form part of your rent/security deposit. The balance of any rent/security deposit is normally payable the working day before you move in.

Description

A WELL PRESENTED ONE BEDROOM DUPLEX APARTMENT.

The property briefly comprises of; entrance hallway with spiral staircase, open plan living and dining area and kitchen. To the first floor there is a double bedroom with fitted storage and bathroom. Externally, there is communal off road parking and well maintained gardens.

This opportunity will not be on the market for long so contact us today to arrange your viewing!

Additional Images

Further Details

- Furnishing: Part Furnished
- Floor: 2 (no lift)
- No. of Floors: 2
- Council Tax Band: A
- Local Authority: Knowsley Metropolitan Borough Council
- Security: Intercom (Audio Only)
- Parking: Visitors, Off Street, Communal
- Outside Space: Communal Gardens
- Heating/Energy: Electric Heating, Double Glazing
- Appliances/White Goods: Electric Oven, Electric Hob (Ceramic), Fridge/Freezer, Washer Dryer
- Bills Included: None

Letting Information

- Date Available From: Now
- Minimum Term: 12 months
- Minimum Annual Household Income: £19,500
- Guarantor NOT required (subject to referencing)
- Pets NOT considered
- Smoking NOT permitted



Living Room



Hallway



Bedroom



Bedroom



Bathroom



Bathroom

Tel: 0151 727 2469
Fax: 0151 727 4943

Atlas Estate Agents, 2 Allerton Road,
Mossley Hill, Liverpool, L18 1LN

Email: lettings@atlasestateagents.co.uk
Website: www.atlasestateagents.co.uk

These particulars are intended to give a fair and substantially correct overall description for the guidance of intending purchasers/tenants and do not constitute an offer or part of a contract. Please note that any services, heating systems or appliances have not been tested and no warranty can be given or implied as to their working order. Prospective purchasers/tenants ought to seek their own professional advice.

All descriptions, dimensions, areas, references to condition and necessary permissions for use and occupation and other details are given in good faith and are believed to be correct, but any intending purchasers/tenants should not rely on them as statements or representations of fact, but must satisfy themselves by inspection or otherwise as to the correctness of each of them.