

Rathmore Avenue, Mossley Hill, L18



For Sale - £550,000 Offers Over

Key Features

- 6 Bedroom 2 Bathroom Terraced House
- EPC Rating: C
- Stunning Period Property in Prestigious L18 Area
- Full of Character - Original Features Retained
- Double Fronted - Set Over Two Floors
- Original Wooden Floors in Entrance and Two Reception Rooms
- Downstairs Shower Room
- Bathroom with Freestanding Bath and Walk in Shower
- Large Rear Garden and Well-Maintained Front Garden
- Excellent Transport Links
- Close to Good Schools
- Grand Entrance with Ornate Plaster Cornice

Further Details

- Tenure: Freehold
- No. of Floors: 2
- Floor Space: 194 square metres / 2,088 square feet
- Council Tax Band: C
- Local Authority: Liverpool City Council
- Parking: On Street
- Outside Space: Back Yard
- Heating/Energy: Gas Central Heating, Double Glazing
- Appliances/White Goods: Gas Cooker, Fridge, Dishwasher

Description

Welcome to Rathmore Avenue, Mossley Hill, L18, where an exceptional property of grandeur awaits its new owners. Proudly presented by Atlas Estate Agents, this terraced house is a captivating treasure, boasting elegance, space, and a distinguished heritage.

Upon entering, you'll be greeted by a grand entrance adorned with exquisite ornate plaster cornice, setting the tone for the lavish charm that awaits within. The original wooden floors in the entrance and two reception rooms whisper of the history that graces this home, a testament to its timeless allure.

This stunning period property extends its hospitality over two floors, offering an impressive 194 square meters of living space. With three spacious reception rooms, the opportunities for elegant gatherings and cherished family moments are endless. The kitchen, a delightful centrepiece, beckons culinary creativity and gastronomic delights.

The upper levels reveal the true extent of this estate's splendour, accommodating six bedrooms that offer ample space for every member of the household and their cherished possessions. The bathrooms add to the luxurious atmosphere, with a mix of modern comfort and classic beauty, featuring a freestanding bath and a walk-in shower that promises relaxation and indulgence.

An additional downstairs shower room ensures convenience for guests and residents alike, while the accommodation spread over two floors guarantees ample privacy and space for all.

Stepping outside, the property continues to amaze. A large rear garden provides a private sanctuary for outdoor gatherings and moments of tranquillity. The front garden, thoughtfully maintained, adds to the curb appeal and enhances the prestigious nature of the L18 area. Leading from the garden, there is access to a very spacious cellar with a wealth of potential and storage room, providing ample opportunity for all belongings to be safely stored.

Aside from the inherent beauty of the property, its location brings undeniable practicality. Excellent transport links ensure that you're always well-connected, while the proximity to good schools promises an exceptional education for the young minds of the household.

For those seeking a home that combines historical significance with modern-day comfort, this double-fronted gem has retained its original features and gracefully evolved with the times.

In summary, this property on Rathmore Avenue, Mossley Hill, L18, stands as a testament to timeless elegance and a rich past. With its abundance of space, grandeur, and character, it offers an extraordinary opportunity to embrace a lifestyle of sophistication and distinction. Seize the chance to become the proud owner of this prestigious residence that echoes with a bygone era while embracing the comforts of today.

Additional Images



Entrance



Kitchen



Dining Room



Dining Room



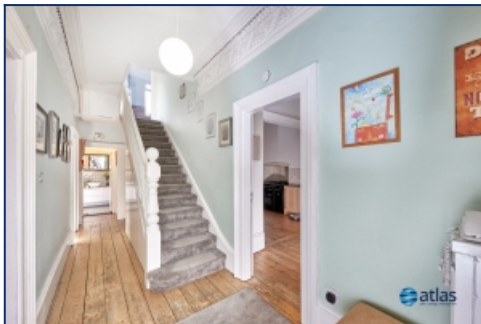
Utility Room



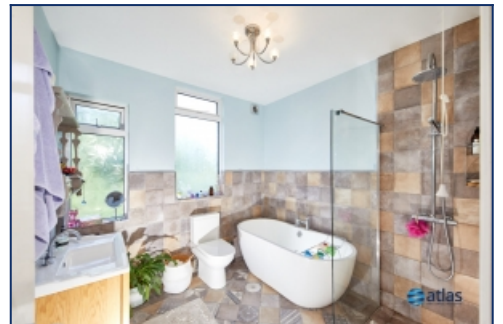
Sitting Room



Sitting Room



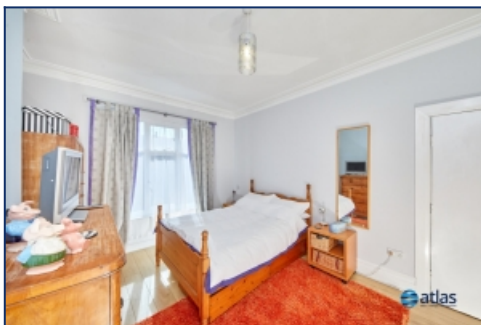
Hallway/Entrance



Bathroom



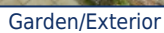
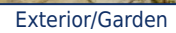
Bedroom



Bedroom



Bedroom

[illegible]

All descriptions, dimensions, areas, references to condition and necessary permissions for use and occupation and other details are given in good faith and are believed to be correct, but any intending purchasers/tenants should not rely on them as statements or representations of fact, but must satisfy themselves by inspection or otherwise as to the correctness of each of them.