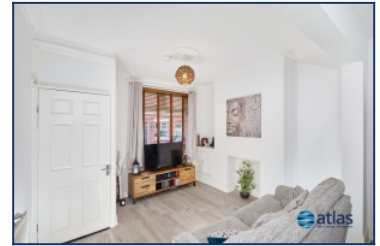


## Gosford Street, Dingle, L8



**For Sale - £120,000 Offers Over**

### Key Features

- 2 Bedroom 1 Bathroom Terraced House
- EPC Rating: D
- Very Well Presented
- Attractive Modern Kitchen
- Modern Bathroom
- Gas Central Heating & Double Glazing
- Popular Residential Area
- Close Proximity to the River Mersey & City Centre
- Easy Access to Otterspool Prom and Albert Dock Area
- Close to Amenities
- Good Transport Links

### Description

Welcome to your future home, a charming terraced house proudly presented by Atlas Estate Agents. Nestled in the heart of the vibrant Gosford Street, this delightful property is now available for sale. With its warm and welcoming atmosphere, this residence offers an ideal blend of comfort, modernity, and convenience.

Step inside, and you'll find a well-designed living space thoughtfully arranged over two floors. The ground floor boasts a beautifully presented reception room, perfect for entertaining guests or enjoying cozy evenings in. Adjacent to this, you'll discover an attractive modern kitchen, a culinary haven where your culinary dreams can come to life.

Venturing upstairs, you'll find two inviting bedrooms, each offering a tranquil retreat at the end of a long day. The modern bathroom is a sanctuary of relaxation.

For those who appreciate the finer details, this property comes complete with gas central heating and double glazing, ensuring your comfort in every season.

Located in a popular residential area, you'll have the privilege of being in close proximity to both the serene River Mersey and the bustling City Centre. Imagine strolling along the riverbanks or taking a short trip to the iconic Albert Dock area. Otterspool Promenade is also within easy reach, offering scenic walks and outdoor leisure activities.

With amenities nearby, you'll never have to go far for daily essentials, shopping, or dining options. Excellent transport links make commuting a breeze,

### Further Details

- Tenure: Freehold
- No. of Floors: 2
- Floor Space: 1 square feet / 0 square metres
- Council Tax Band: A
- Local Authority: Liverpool City Council
- Parking: On Street
- Outside Space: Back Yard
- Heating/Energy: Gas Central Heating, Double Glazing

connecting you to the heartbeat of the city and beyond.

Don't miss out on this incredible opportunity to own a property that combines modern living with the charm of a popular residential area. Contact Atlas Estate Agents today to arrange your viewing and embark on a journey towards a brighter, more convenient future in this lovely home on Gosford Street.

Additional Images



Bedroom One



Bedroom Two



Living Room/Diner



Dining



Kitchen



Kitchen



Rear Yard

Floor Plans



Tel: 0151 727 2469  
Fax: 0151 727 4943

Atlas Estate Agents, 2 Allerton Road,  
Mossley Hill, Liverpool, L18 1LN

Email: [sales@atlasestateagents.co.uk](mailto:sales@atlasestateagents.co.uk)  
Website: [www.atlasestateagents.co.uk](http://www.atlasestateagents.co.uk)

These particulars are intended to give a fair and substantially correct overall description for the guidance of intending purchasers/tenants and do not constitute an offer or part of a contract. Please note that any services, heating systems or appliances have not been tested and no warranty can be given or implied as to their working order. Prospective purchasers/tenants ought to seek their own professional advice.

All descriptions, dimensions, areas, references to condition and necessary permissions for use and occupation and other details are given in good faith and are believed to be correct, but any intending purchasers/tenants should not rely on them as statements or representations of fact, but must satisfy themselves by inspection or otherwise as to the correctness of each of them.